

mahi te mahi ♡

ko tātou, ko kaiti ♡



Whakawhanaungatanga

Tangata (people)
connected to place and
people, forming positive
relationships with
others, we all belong
and we all succeed
together



Kei konei au! - I am here



Korongā Have purpose ♡

He manako te koura i
kore ai

Wishing for the
crayfish won't bring it!

Mauri ora
Alsop and Kupenga





Whakaohoho
To be motivated

Mauri tū, mauri ora

An active soul is a
healthy soul



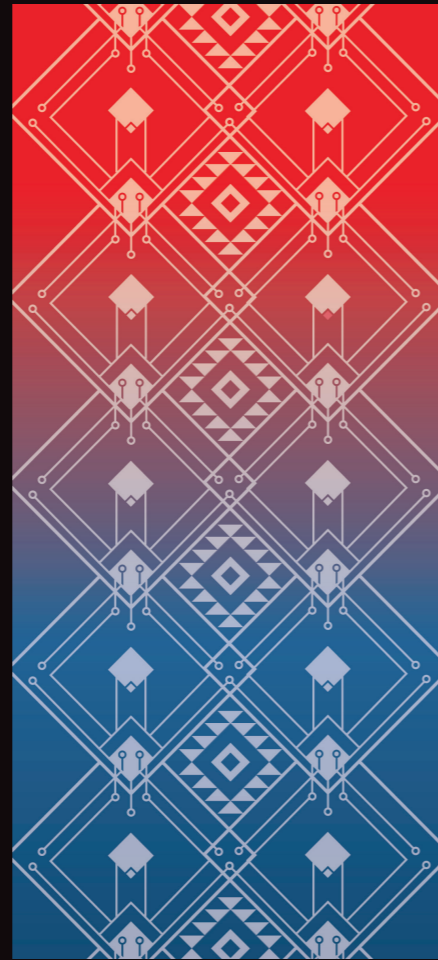
Mauri ora
Alsop and Kupenga

We are all leaders Collaboration - mahitahi

E Hara taku toa
I te toa takitahi
He toa takitini

My strength is not as
an individual
But as a collective

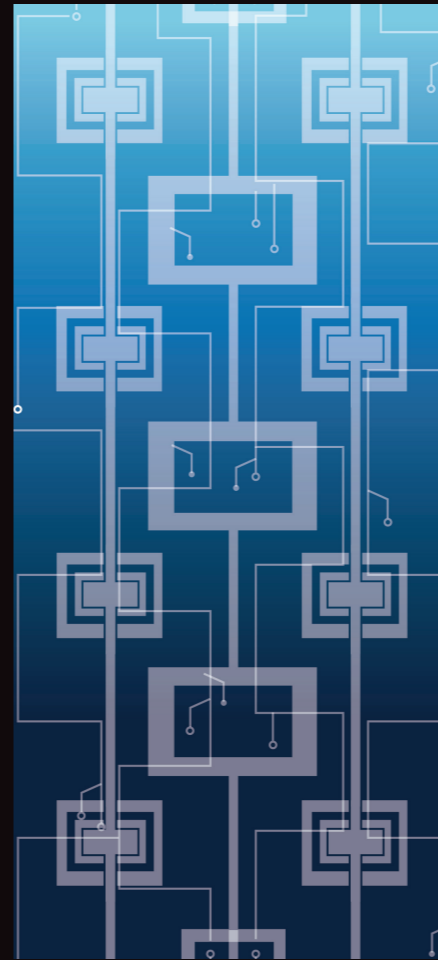
Mauri ora
Alsop and Kupenga



Tokatūtanga

Courageous

This pattern the 'Pātiki' translates to flounder and refers to a person who demonstrates the ability to be 'courageous.' The Pātiki or flounder also represents rangatiratanga, resilience and loyalty.



Angitūtanga

Curiosity

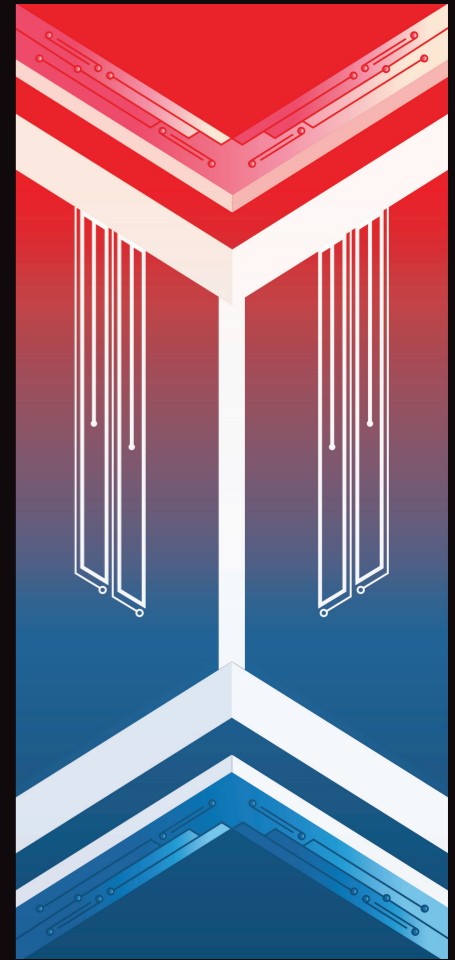
This pattern is the Ngāti Porou version of 'Poutama' and speaks to a person who demonstrates the ability to be 'curious.' A person who wants to know and learn more. It represents exploration and way finding and an opportunity to reflect much like Tane when he went in search of the three baskets of knowledge.



Tāmirotanga

Collaborative

Known as 'Ara Moana' this pattern refers to a person who demonstrates the ability to operate in a 'collaborative' manner. It also represents alternative pathways or ways of completing a task and working together to create better relationships.



Āhurutanga

Compassionate

'Te Kaokao o Papatūānuku' is this pattern which speaks to a person who demonstrates the ability to be 'compassionate.' Someone who can provide safe and warm spaces to support others around them.

Tiro whakamua - look ahead

Ka whāia te wāhie
Mo takurua ka mahia
te kai mō te tau

If you look for firewood in
the winter, you will have
plenty of food all year
around

Mauri ora
Alsop and Kupenga



Miharo - Wonder

The clouds in the sky gather,
but above them extends the Milky Way

E tūtaki ana ngā kapua o te rangi, kei runga te
Mangōroa e
Kōpae pū ana

Mauri ora - Alsop and Kupenga

